



Kitchener Close, Lakenheath, Suffolk, IP27 9FT

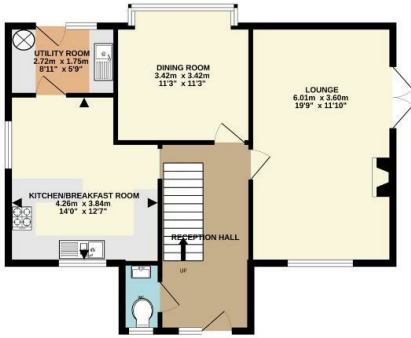
Rent - Asking Price £425,000 Deposit -

A spacious detached family home situated in a select development of similar homes on the outskirts of the village and offered to the market with no chain.

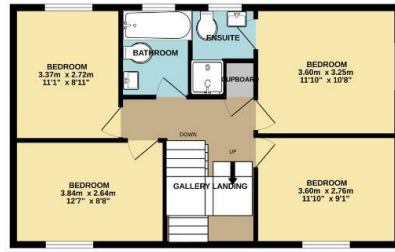
- SPACIOUS DETACHED FAMILY HOME
- ACCOMMODATION ARRANGED OVER THREE FLOORS
- FAMILY & ENSUITE BATH/SOWER ROOMS
- OIL FIRED RADIATOR HEATING
- SIX WELL PROPORTIONED BEDROOMS
- SITUATED IN A SELECT DEVELOPMENT
- DRIVEWAY & DOUBLE GARAGE
- NO ONWARD CHAIN



GROUND FLOOR
64.9 sq.m. (699 sq.ft.) approx.



1ST FLOOR
58.5 sq.m. (630 sq.ft.) approx.



2ND FLOOR
40.6 sq.m. (437 sq.ft.) approx.



TOTAL FLOOR AREA: 164.1 sq.m. (1766 sq.ft.) approx.

Whilst every attempt has been made to ensure the accuracy of the floorplan contained here, measurements of doors, windows, rooms and any other items are approximate and no responsibility is taken for any error, omission or mis-statement. This plan is for illustrative purposes only and should be used as such by any prospective purchaser. The services, systems and appliances shown have not been tested and no guarantee as to their operability or efficiency can be given.
Made with Metropix ©2025

